

FIRM PROFILE

SINCE 1967, Wilson Engineering has provided civil engineering and surveying to both public and private clients throughout the Pacific Northwest.

Our core mission is to create and restore **vital public infrastructure** for drinking water treatment and delivery, sewage collection and treatment, stormwater treatment and drainage, site development and institutional facilities.

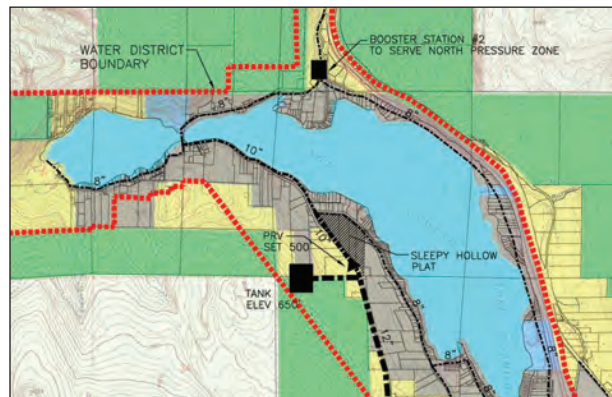
Satisfied clients account for over ninety percent of Wilson's new projects. We keep our clients -small and large, urban and rural- well served and moving forward by:

- Communicating the need
- Finding the funding
- Taming the process steps
- Designing quality, long-lasting and flexible projects, and
- Completing the project at an affordable cost to constituents

We urge you to contact Wilson Engineering, LLC with your area's infrastructure questions and challenges.



PROJECTS



MUNICIPAL ENGINEERING

WATER

- Surface and Groundwater Supply
- Water Treatment Plants
- Distribution and Transmission Mains
- Pump Stations
- Reservoirs
- Water System Plans
- Small System Management Plans
- Water Use Efficiency

WASTEWATER

- Wastewater Treatment Plants
- Collection Systems
- Pump Stations
- Comprehensive Sewer Plans
- "Alternative" Sewer Systems
- Sewer System Rehabilitation
- Infiltration/Inflow
- Trenchless Technologies

GIS

- Data Set Creation/Database Integration
- Utility Mapping/Facilities Inventory
- Zoning Maps
- ULID Creation
- Modeling and Analysis
- LIDAR Processing
- On-Site GIS Deployment and Client Training



SENSIBLE CIVIL SOLUTIONS

WILSON ENGINEERING, LLC

MUNICIPAL CLIENTS

- Bellingham, Washington
- Blaine, Washington
- Everson, Washington
- Ferndale, Washington
- Goldendale, Washington
- Lynnwood, Washington
- Mattawa, Washington
- Moses Lake, Washington
- Palouse, WA
- Soap Lake, Washington
- Sumas, Washington
- Wilbur, Washington
- Wrangell, Alaska

DISTRICT AND ASSOCIATION CLIENTS

- Eastsound Sewer and Water
- Georgia Manor Water
- Glacier Water
- Glenhaven Lakes Club
- Hilltop Water Owners
- Joe Louie Water
- Lake Terrill Water
- Lake Whatcom Water and Sewer
- Lummi Island Scenic Estates
- Maple Falls Water Co-op
- Mount Baker Water
- Nooksack Valley Water
- Pleasant Valley Water
- Pole Road Water
- Samish Water

CIVIL ENGINEERING

- Water, Wastewater & Stormwater Systems
- Water & Wastewater Treatment Plants
- Water Quality Studies
- Comprehensive Plans
- Roads and Parking
- Green, Sustainable & Low Impact Development
- Subdivisions & Site Development
- Park Development
- Permitting and Planning
- Construction Management
- Inspection

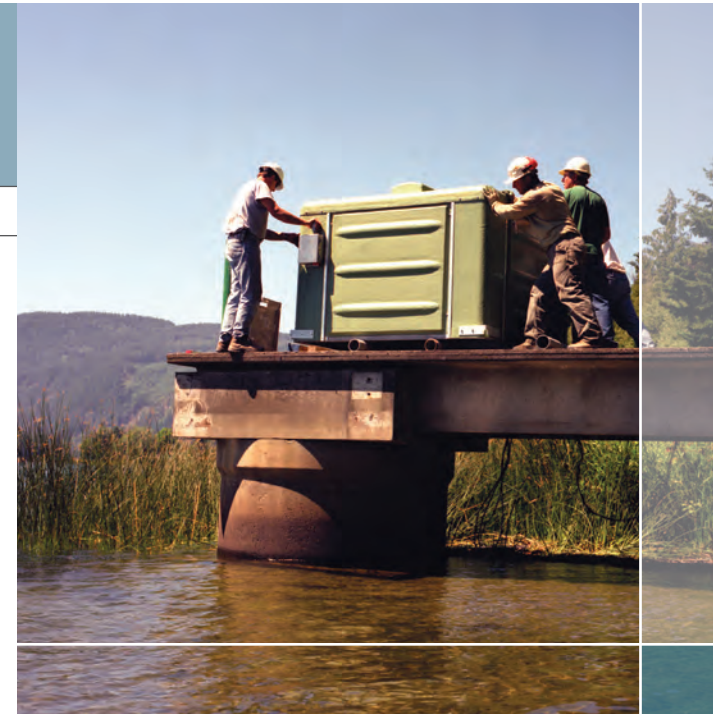
SURVEYING

- Topographic
- Hydrographic River Surveys
- Bathymetric Mapping
- GPS & 3D Scanning, LIDAR Processing
- GIS Mapping
- Boundary
- Right-of-way
- Monument networks
- GPS Control for Aerial Survey
- Construction Survey

FOR MORE INFORMATION, PLEASE CONTACT:

ANDY LAW, PE
info@wilsonengineering.com

805 Dupont Street, Suite 7
Bellingham, WA 98225
P » (360) 733-6100
F » (360) 647-9061



WATER & WASTEWATER SYSTEMS

CIVIL ENGINEERING

LAND AND HYDROGRAPHIC SURVEYING

GIS/MAPPING/PLANNING

CONSTRUCTION MANAGEMENT

